

Idina

Shawl

by Irina Anikeeva



Finished measurements

72"/183 cm wingspan.

18½"/47 cm height at center spine.

Measurements are taken after blocking.

Yarn

Approximately 800 yards/732 m of fingering weight yarn.

2 skeins of Baah Yarn Manhattan (30% Cashmere, 70% Merino, 400 yds/366 m in 100 gr); Frozen.

Needles

Size US 4/3.5 mm circular needle 32"/80 cm long, or size to obtain gauge.

While gauge is not critical for this project, the different gauge can affect the size and overall yardage.

Notions

Markers (optional), crochet hook size E/3.5 mm and waste yarn for Provisional Cast On, cable needle, tapestry needle.

Gauge

20 sts and 32 Rows = 4"/10 cm on size US 4/3.5 mm needles in Stockinette st, after blocking.

Stitch Guide

Stockinette stitch

RS Row: Knit all stitches.

WS Row: Purl all stitches.

Notes

- This shawl is worked from the top edge down.
 - The crescent shape of shawl is achieved by increasing the 4 stitches on every right side Row and 2 stitches on every wrong side Row of the shawl's body.
 - Knitters may consider placing markers between the chart repetitions.
 - Circular needle is used to accommodate large number of stitches.
-

Glossary

| | | | |
|-----------------|---|--------------|---|
| CN | Cable needle | P | Purl |
| K | Knit | RS | Right Side |
| K2TOG | Knit 2 stitches together – 1 stitch decreased | PYOP | Purl a stitch, don't drop it off, yarn over, purl into front loop of the same st again, slip stitch from left needle – 2 stitches increased |
| KF&B | Knit into a stitch and leave it on the needle. Knit through the back loop of the same stitch). Slip both stitches off the needle | St(s) | Stitch(es) |
| KYOK | Knit a stitch, don't drop it off, yarn over, knit into front loop of the same st again, slip stitch from left needle – 2 stitches increased | WS | Wrong Side |

For comments or questions regarding this pattern, please contact me at irmiandesign@gmail.com

You can also find me on Ravelry as Hibis411

Follow me on Instagram [@irmiandesign](https://www.instagram.com/irmiandesign) or Facebook: [IrmianDesign](https://www.facebook.com/IrmianDesign)

Directions

BODY

Work Garter Tab as follows:

With waste yarn and Provisional Cast On method (see special Techniques), cast on 3 sts.

Knit all sts in the next 6 Rows. Keeping your work on right needle, rotate it 90 degrees clockwise and pick up and knit 3 sts along the edge of the tab. Turn work 90 degrees clockwise again, carefully unravel the waste yarn from Provisional cast on, place sts on spare needle and knit into these 3 sts. [9 sts]

Body Row 1 (RS): K3, KYOK, knit to last 4 sts, KYOK, k3. [4 sts increased]

Body Row 2 (WS): K3, YO, purl to last 3 sts, YO, k3. [2 sts increased]

Repeat last 2 Rows 6 more times. [51 sts]

Work Eyelet Insert as follows:

Next Row (RS): K3, PYOP, purl to last 4 sts, PYOP, k3. [4 sts increased]

Next Row (WS): K3, YO, purl to last 3 sts, YO, k3. [2 sts increased]

Next Row (RS): K3, KYOK, *YO, K2TOG; repeat from * to last 5 sts, YO, k1, KF&B, k3. [4 sts increased]

Next Row (WS): K3, YO, purl to last 3 sts, YO, k3. [2 sts increased]

Next Row (RS): K3, PYOP, purl to last 4 sts, PYOP, k3. [4 sts increased]

Next Row (WS): K3, YO, purl to last 3 sts, YO, k3. [2 sts increased]

Now we have 69 sts on needle.

Work Body Rows 1 and 2 another 7 times. [111 sts]
Work 6 Rows of Eyelet Insert. [129 sts]

Work Body Rows 1 and 2 another 8 times. [177 sts]
Work 6 Rows of Eyelet Insert. [195 sts]

Work Body Rows 1 and 2 another 9 times. [249 sts]
Work 6 Rows of Eyelet Insert. [267 sts]

Work Body Rows 1 and 2 another 9 times. [321 sts]

Next Row (RS): K3, KYOK, knit to last 4 sts, KYOK, k3. [325 sts]

Next Row (WS): K3, PYOP, purl to last 4 sts, PYOP, k3. [329 sts]

LACE BORDER

Lace Set Up Row 1 (RS): K3, work Row 1 of Lace Chart, working Chart repeat 26 times, then work Row 1 of Lace Chart over sts 15-27, k3.

Lace Set Up Row 2 (WS): K3, work Row 2 of Lace Chart over sts 27-15, then work Row 2 of Lace Chart, working Chart repeat 26 times, k3.

Continue to work garter edge and follow Lace Chart as established, until Row 60 of Lace Chart is complete. [383 sts]

Bind Off Row: Slip the first st, k1 into next st, * knit last 2 sts together through back loop, knit next st; repeat from * to end, knit last 2 sts together through back loop.

Weave in ends, block to measurements.

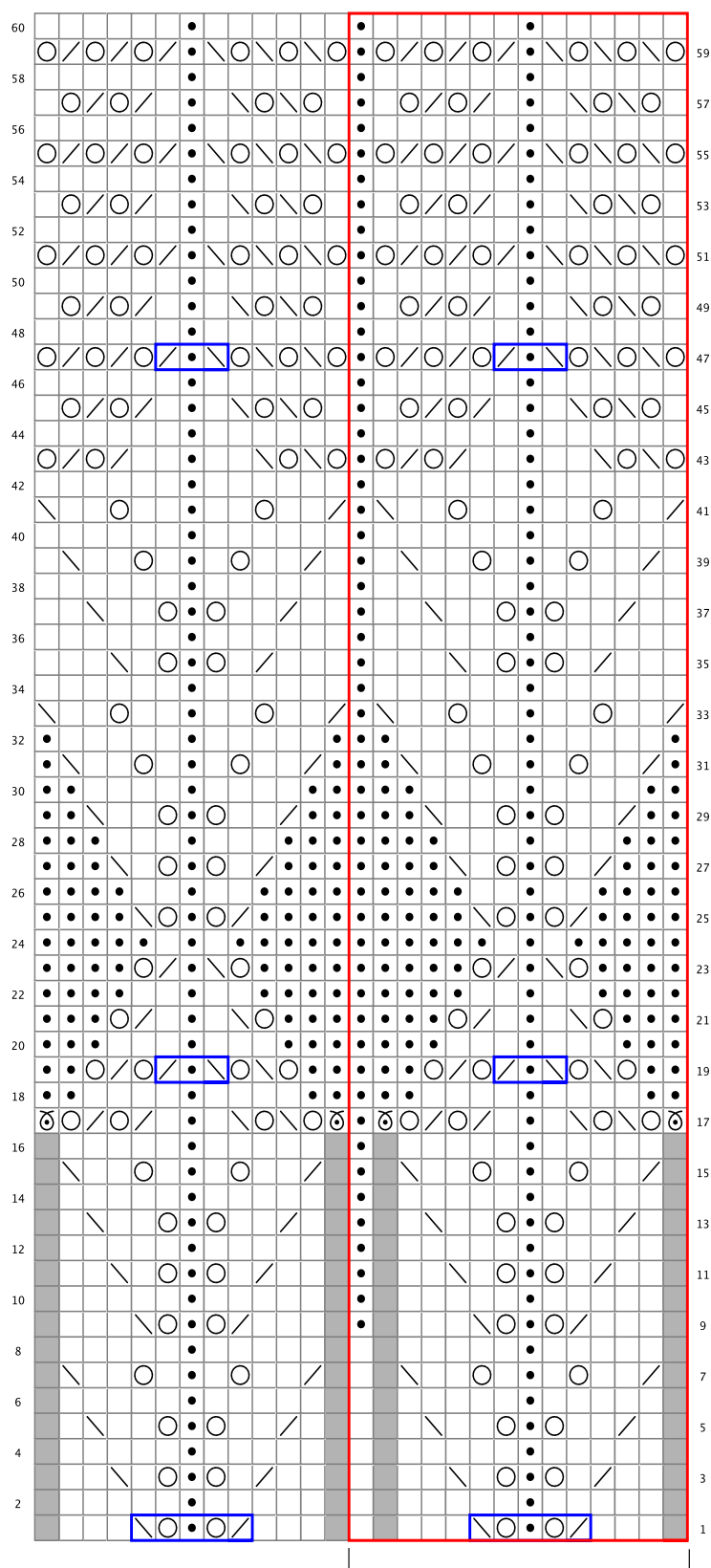
Special Techniques

Provisional Cast-On method

Using scrap yarn and crochet hook, chain the number of sts to cast on, plus a few extra. Cut a tail and pull the tail through the last chain. With knitting needle and yarn, pick up and knit the stated number of sts through the “purl bumps” on the back of the chain. To remove scrap chain, when instructed, pull out the tail from the last crochet st. Gently and slowly pull on the tail to unravel the crochet sts, carefully placing each released knit st on a needle.












Lace Chart



12 to 14-st Chart repeat
(Work 26 times)

Legend

-  K: Knit stitch on RS; purl stitch on WS
-  P: Purl stitch on RS; knit stitch on WS
-  YO: Yarn over
-  K2TOG: Knit 2 stitches together – 1 stitch decreased with right slant
-  SSK: Slip 1 stitch knitwise, slip 1 stitch knitwise, return 2 slipped stitches back to left needle and knit them through back loops – 1 stitch decreased with left slant
-  M1P: With left needle tip, pick up the thread between stitches from back to front. Purl lifted loop through the front loop – 1 stitch increased
-  12 to 14-stitches repeat
-  **Wrapped stitches:** Work stitches to be included in wrap, transfer these stitches from right needle to CN, wrap yarn around stitches on CN 2 times counter-clockwise. Transfer stitches from CN to right needle and continue row.
-  No stitch